

# PILOT PRO™

## IGNITION SERIES

---



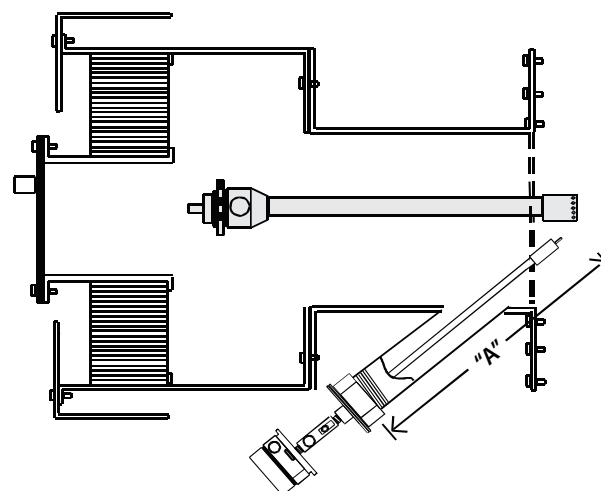
### The Combustex Pilot Pro™ 500

*Ignition System with Pilot Tip and Flame Sensor*

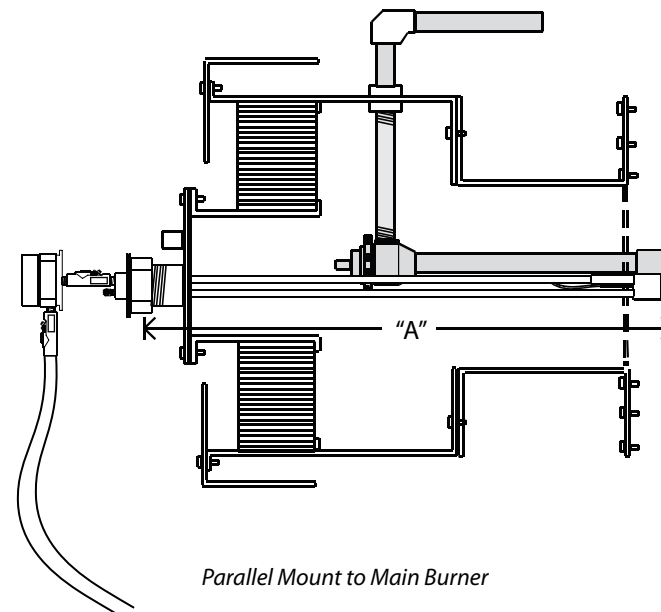
The *Intertek approved* alternative ignition system  
delivering *safety, reliability* and *versatility*.

The **Combustex Pilot Pro™ 500** provides safe, reliable ignition on a variety of line heaters, treaters, reboilers and other gas-fired industrial heaters.

These units offer easy installation, maintenance and flame status reporting, and can be initiated both locally and remotely. With the Pilot Pro™ 500, you can maximize operational efficiency while keeping burner ignition safe and reliable.



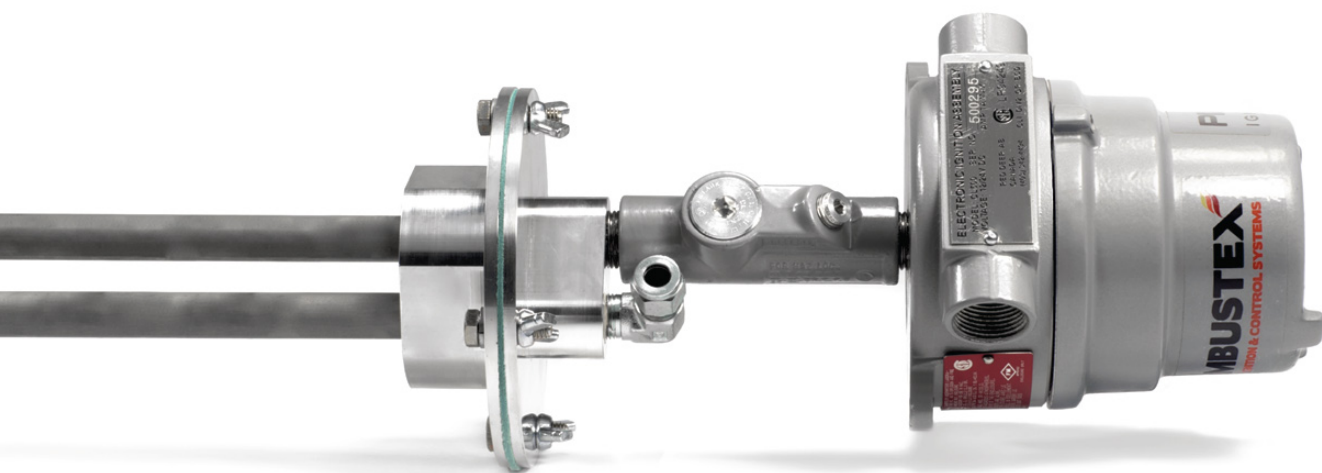
Angle Mount to Main Burner



Parallel Mount to Main Burner



Thermocouple sensing and spark plug ignition for safe, reliable operation.



The Pilot Pro™ 500 is at its most capable when installed with a Combustex BMS-2000 Series Burner Management System. Designed, built and tested around the features of the BMS-2000, the Pilot Pro™ 500 can respond to both remote and local commands, preset control parameters, as well as powerful automated sequencing from the BMS controller. Visit us online at [www.combustex.com](http://www.combustex.com) to learn more.



## KEY FEATURES

- Unique 316 SS Pilot Head Assembly.
- "Hot" Electronic Ignition.
- Retractable assembly easily installs through a standard 2" or 3" nipple. Easily removed for inspection.
- High temperature ignition lead is fully protected with 316 SS conduit.
- Local or remote spark ignition.
- Low fuel gas consumption.
- Easily incorporated system flame status reporting for burner management.

**Call Us Toll Free: 1-855-226-2582**

# TECHNICAL SPECIFICATIONS

## Electrical

Environment .....	CSA C22.2 Class 1 Div. 2 Groups B, C and D Hazardous Locations
Power Supply .....	12 - 30 VDC
Current Draw .....	40 mA (ignition) 0mA (normal operation)
Ignition (25KV) .....	25 KV

## Fuel Gas

Fuel Type .....	Natural Gas or Propane
Working Pressure .....	1 Psi (Natural Gas), 0.5 Psi (Propane)
Maximum Test Pressure .....	25 Psi
Fuel Consumption .....	8 SCFH, 22000 BTU/Hr.

## Physical

Materials and Parts .....	Aluminum, SS
Supply Port .....	3/8" Tubing
Mounting .....	2" or 3" NPT Nipple
Insertion Length .....	12" through 72"

## OTHER PRODUCTS



**The Canlite  
Ignition Torch**

*Eliminate the use of dangerous  
rags and flammable liquids.*

### The BMS-2000 Series



*Feature Packed Burner  
Management System*

### The Pilot Pro™ 900



*Ignition System with Pilot  
Tip and Flame Sensor*

## CONTACT

# COMBUSTEX

## BURNER IGNITION & CONTROL SYSTEMS

A Canalta Controls Company

**Phone:** 403.342.4494 **Fax:** 403.346.7110

**Email:** sales@combustex.com **Web:** www.combustex.com

**Call Us Toll Free:** 1-855-226-2582

6759 65th Ave.  
Red Deer, AB T4P 1X5  
CANADA